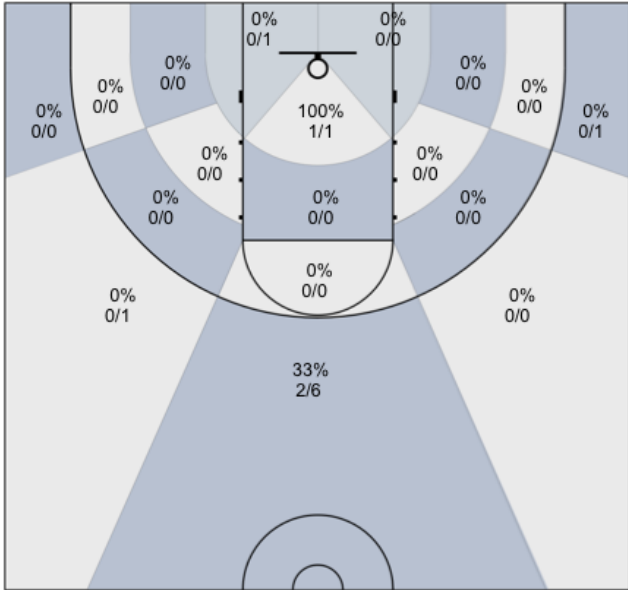
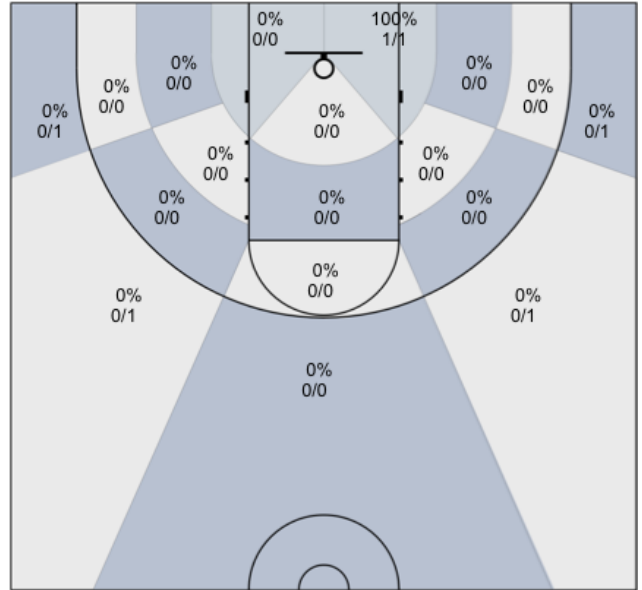




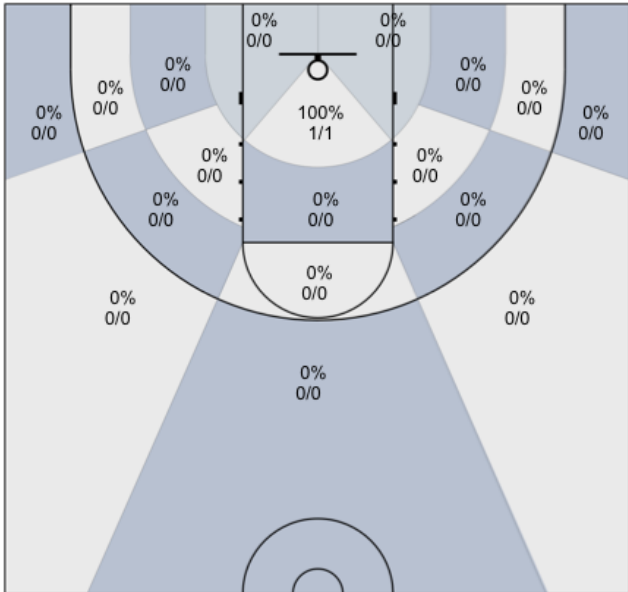
McBratney: 30% (3/10)



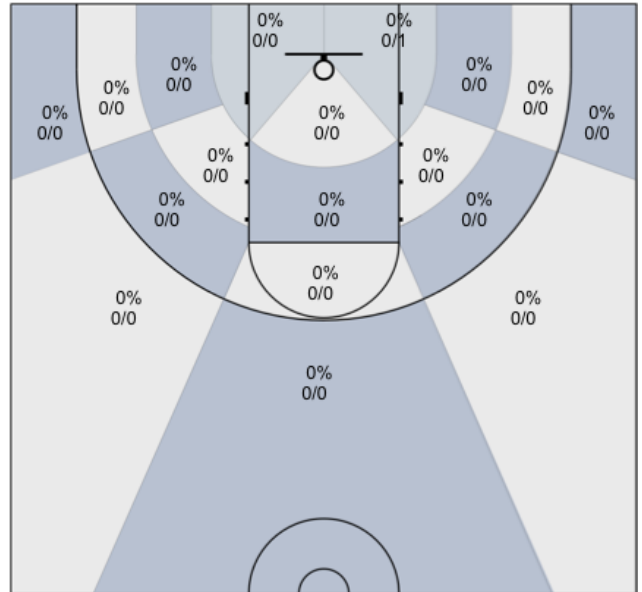
Mendoza: 20% (1/5)



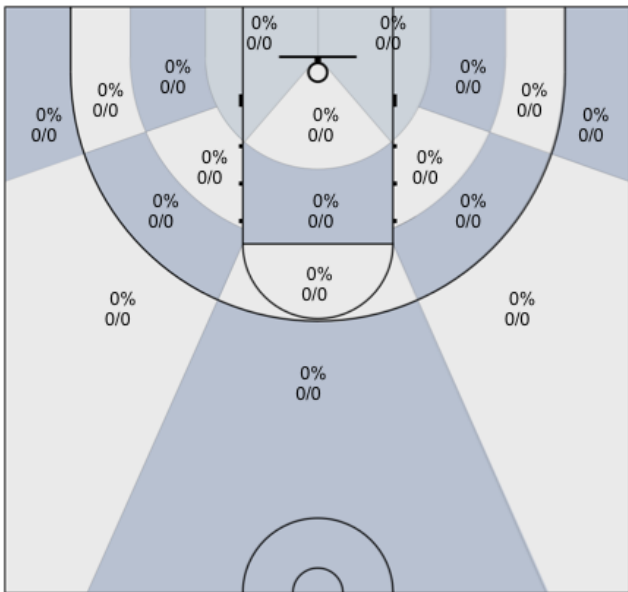
Coolidge: 100% (1/1)



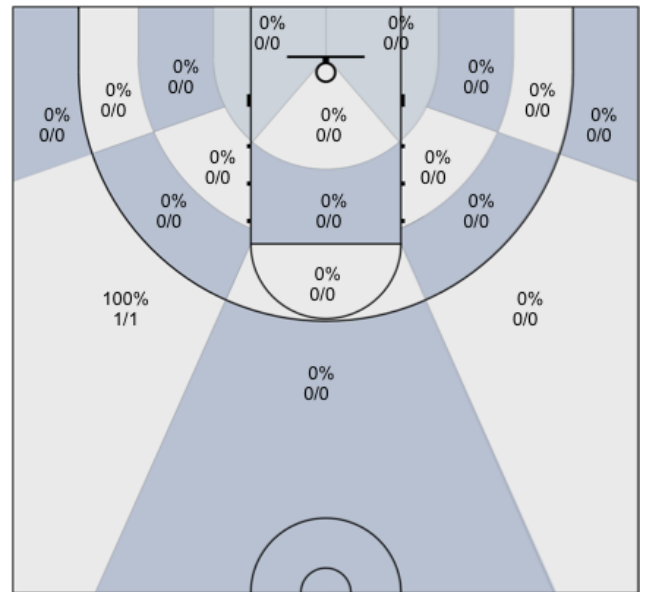
Beeler: 0% (0/1)



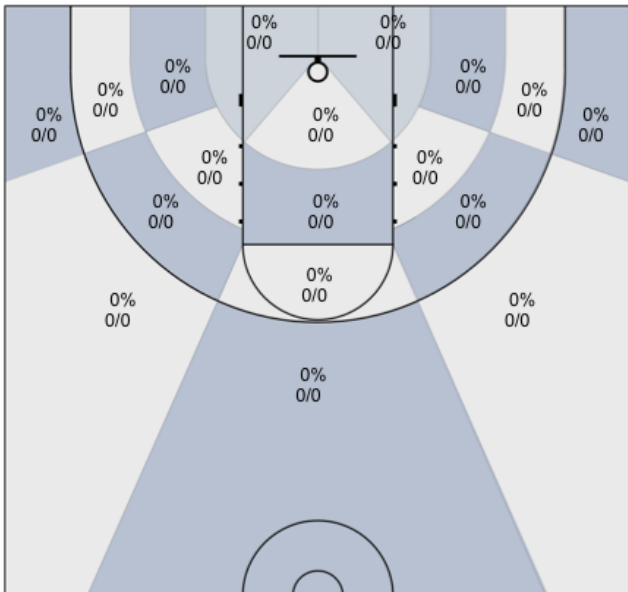
Daniel: 0% (0/0)



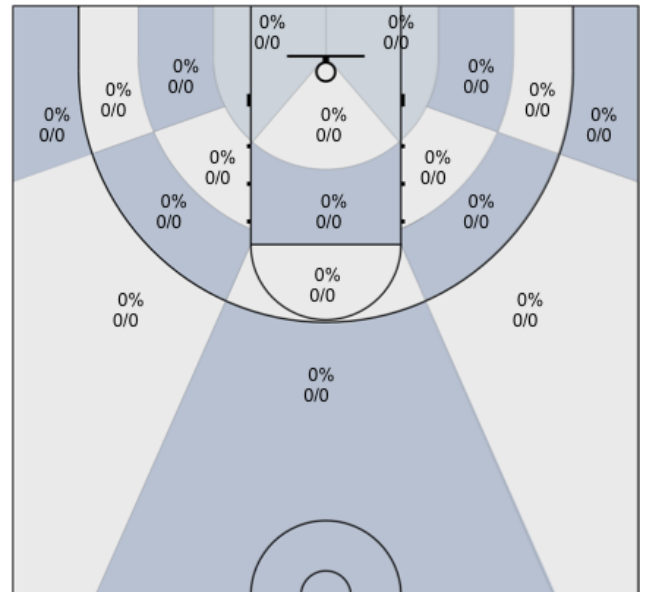
Evans: 100% (1/1)



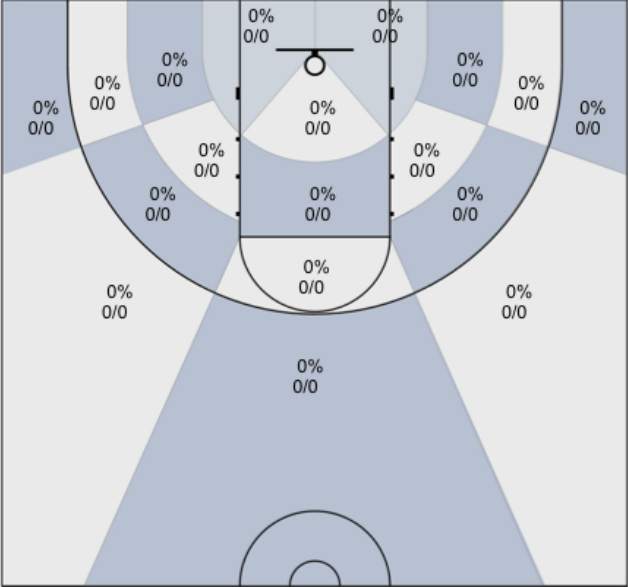
Lane: 0% (0/0)



Sanders: 0% (0/0)



Avila: 0% (0/0)



Nagle: 0% (0/0)

